

A Study of Medical Library Association Journal

Mr. Dukare Eknath Prabatrao

Author Affiliation:

PG Student, Dept of Library & Information Science, Vidyadhan College, Aurangabad.
Maharashtra, India. Email:eknath1990@gmail.com

Abstract:

Analysis of information or data is one of the important part of any study. Data analysis is doing for the purpose of huge volume of data is reduced into meaning full case report. Analysis of total 1694 citations articles in the journal during 2014 to 2017. The was done by using various parameters like to identify the car e journals, to rank of cited journal, to rank of cited author to find out geographical distribution of citations to find out the types of cited document, to find out of the total citation of the average in the journals. The data or information was presented in the form of table and graphs to show the result prominently and easily.

Keyword: Journal of Medical Library Association, Scientometric Analysis, Etc.

Information:-

A Scientometric analysis: Journal of Medical Library Association online. Scientometric analysis is a branch of Bibliometric. It is an important research tools for understanding of the subject it aims at measuring the utility of documents and relationship between documents and fields. Journal of Medical Library Association Online is halfly published in the year. Editor-in-Chief of the journal is Thomas Longas. in 1936. ISSN:1536-5050(Online).The Present study is based on 4 Volumes, 16 issues of Journal of Medical Library Association Online during 2014-2017.

Objectives of the studies

The main objective of the present studies issue follows -

- 1) To find out distribution of contributions (volume wise).
- 2) To find out authorship Pattern of contributions
- 3) To find out authorship Pattern of contributions (ISSUE wise)
- 4) To find out contribution (Institution –wise)
- 5) To find out the geographical distribution of contribution international level is show.
- 6) To find out average citation per contribution in each volume
- 7) Average page (per volume and per contribution) contribution

Distribution of contributions (volume wise) .

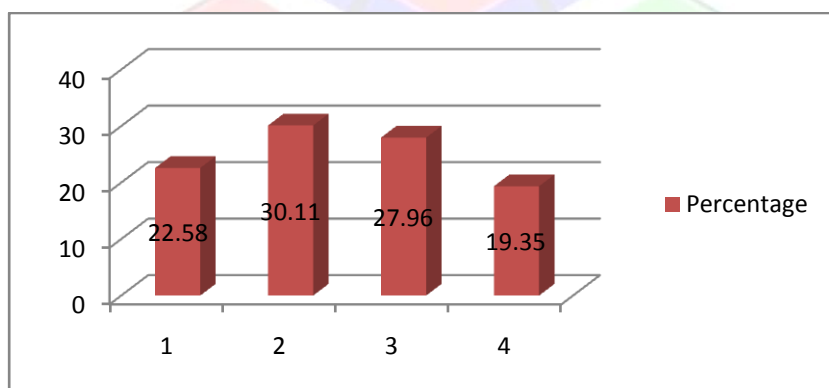
The distribution of contributions is shown in table No.1

Table No.1.Distribution of Contributions

Distribution of Contribution's (Volume-Wise)				
Year	Volume No.	No. of Issue	No. of Contribution	Percentage
2017	104	4	21	22.58
2016	103	4	28	30.11
2015	102	4	26	27.96
2014	101	4	18	19.35
Total		16	93	100.00

Table No.1 & Figure No.1 depicts the details regarding the number of Articles published during 2014-2017 which was 93 and the year wise analysis of the contribution shows that average number of per year contribution is maximum i.e. 28 (30.11%) in the year 2016.

Figure no. 1 Distribution of Contributions



Authorship Pattern of Contributions

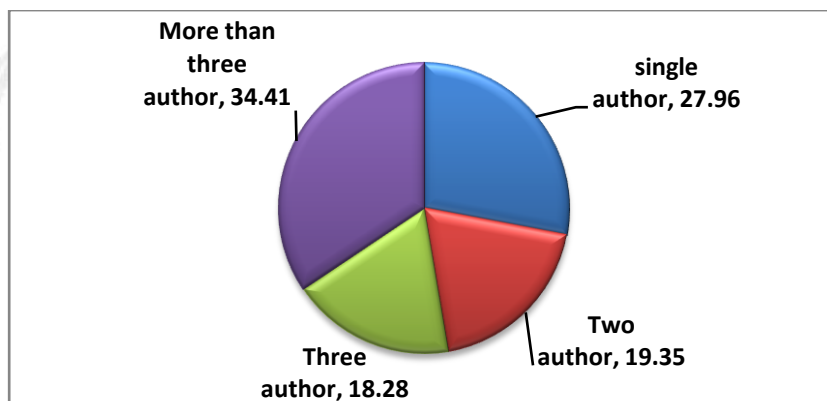
The authorship pattern of contributions is for shown in Table No.2.

Table No.2 Authorship Pattern of Contribution

Authorship Pattern of Contribution's			
No. of Author	No. of Contribution	No. of Authorship	Percentage
Single Author	26	26	27.96
Two Authors	18	36	19.35
Three Authors	17	51	18.28
More than Three Authors	32	178	34.41
Total	93	291	100.00

Table No. 2 & Figure No. 2 Indicates that the details about the authorship pattern 32 articles (34.41%) out of 93 articles have been contributed by More than author which is followed by Single Authors 26 (27.96%), 18 articles (19.35%) by two authors and 17 articles (18.28%) by three authors. Where “Hypothesis No. 1 is valid not “Majority of the contributions are contributed by More than three Author”.

Figure No.2 Authorship Pattern of Contribution



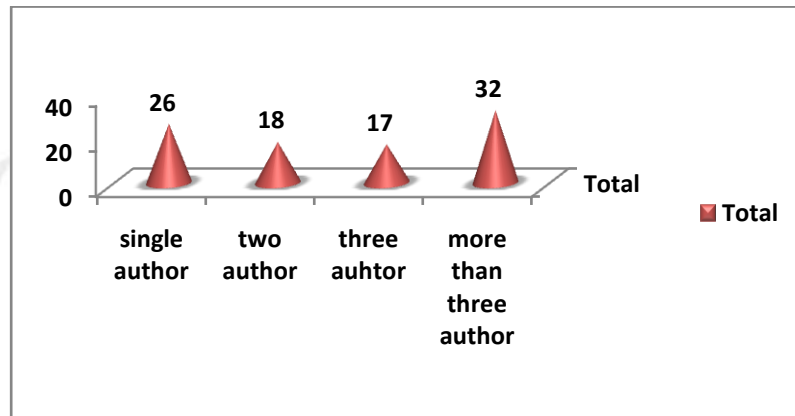
Authorship pattern of Contribution (ISSUE wise)

Table No.3 Authorship of contribution (ISSUE wise)

Authorship Pattern of Contribution's (Volume-Wise)					
Volume No.	Single Author	Two Authors	Three Authors	More than Three Authors	Total Article
104	6	2	4	9	21
103	6	9	3	10	28
102	6	5	7	8	26
101	8	2	3	5	18
Total	26	18	17	32	93

Table No.3 and Fig No. 3 Shows the authorship pattern of contributions volume-wise regarding contributions by a single author records the highest contributions (32), However the more than author contributions, (26) shows the single author contributions (18), the two author contributions (17), reflects the maximum percentage.

Figure No.3 Authorship Pattern of Contribution (ISSUE-wise)



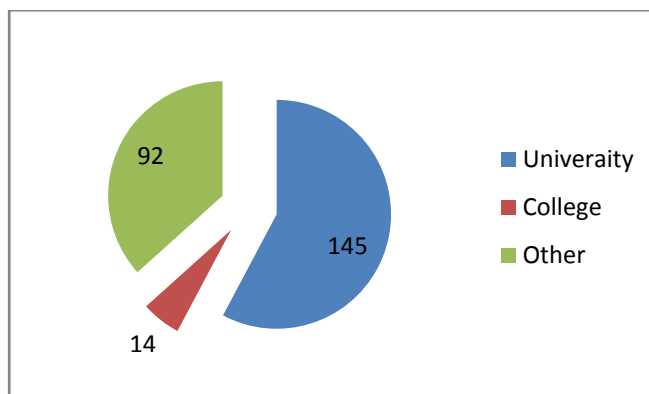
Contribution (Institution –wise)

Contribution is displayed in the table no.4.

Contribution's (Institution-Wise)					
Volume No.	Year	University	College	Other	Total
104	2017	40	6	32	78
103	2016	49	1	35	85
102	2015	63	5	14	82
101	2014	33	2	11	46
Total		185	14	92	291

Table No.4 depicts the geographical distribution of contributions, University wise at the national level followed by colleges. It is inferred from the above table that university-wise contribution maximum is 185 contributions were 14 contribution and College contributions. Hypothesis No.2 is valid hence i.e. “maximum number of contribution is at university level”.

Figure no. 4 Institution wise contribution



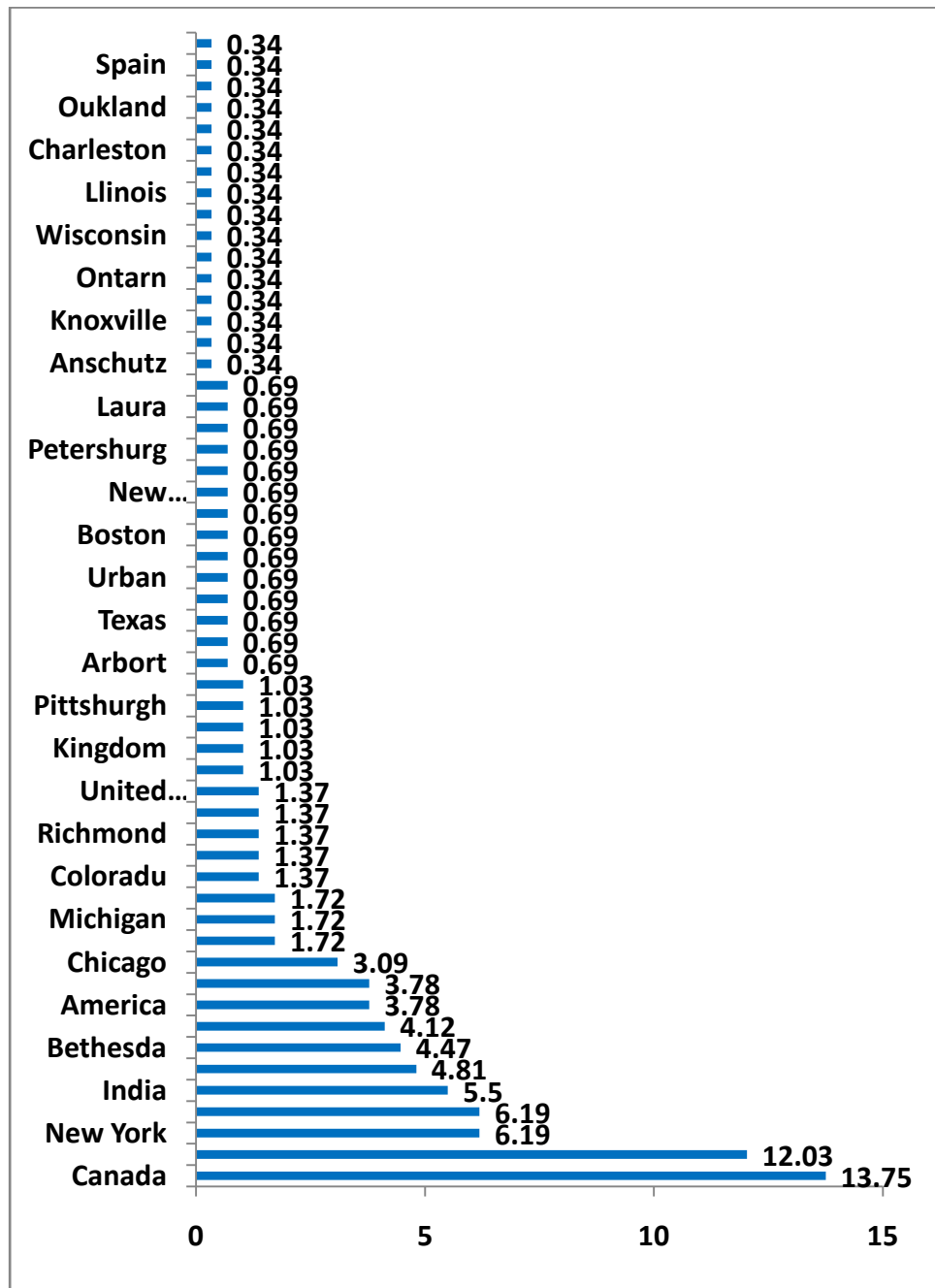
The Geographical distribution of contribution International level

Geographical Distribution of Contribution's At International Level			
Sr. No.	Name of Country	No. of Contribution	Percentage
1	Canada	40	13.75
2	USA	35	12.03
3	New York	18	6.19
4	Washington	18	6.19
5	India	16	5.50
6	Utah	14	4.81
7	Bethesda	13	4.47
8	MAXICO	12	4.12
9	America	11	3.78
10	Louisiana state	11	3.78
11	Chicago	9	3.09
12	Mary land	5	1.72
13	Michigan	5	1.72
14	California	5	1.72
15	Coloradu	4	1.37
16	Kentucky	4	1.37
17	Richmond	4	1.37
18	Port land	4	1.37
19	United states	4	1.37
20	Curolina	3	1.03
21	Kingdom	3	1.03
22	Honolulu	3	1.03
23	Pittshurgh	3	1.03
24	Netherlands	3	1.03

25	Arbort	2	0.69
26	Boulevard	2	0.69
27	Texas	2	0.69
28	Italy	2	0.69
29	Urban	2	0.69
30	North carolina	2	0.69
31	Boston	2	0.69
32	Nashville	2	0.69
33	New orieans	2	0.69
34	Rockford	2	0.69
35	Petershurg	2	0.69
36	Buolington	2	0.69
37	Laura	2	0.69
38	Stahford	2	0.69
39	Anschutz	1	0.34
40	Alerta	1	0.34
41	Knoxville	1	0.34
42	Florido	1	0.34
43	Ontarn	1	0.34
44	Alabama	1	0.34
45	Wisconsin	1	0.34
46	Claiborne	1	0.34
47	Llinois	1	0.34
48	Manchester	1	0.34
49	Charleston	1	0.34
50	Doha	1	0.34
51	Oukland	1	0.34
52	Jajalla	1	0.34
53	Spain	1	0.34
54	Srilanka	1	0.34
Total		291	100.00

Table No.5 shows the geographical distributions of contributions at International level Canada is Maximum percentage 40 (13.75%), and minimum Percentage of 16 in Srilanka (0.34).

Figure no. 5 Geographical
 Distribution of contribution in International level



Average Citation per contribution in each volume

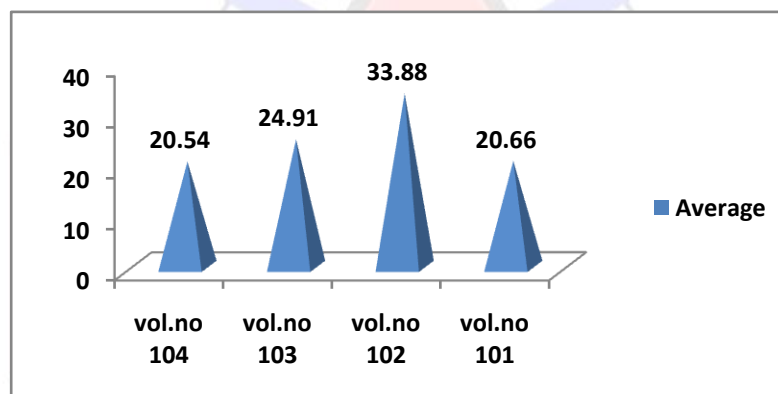
The average citation per contribution in each volume is showed in

Table No.6 Average Citation per contribution in each volume (ISSUE wise)

Average Citation Per Contribution In Each Volume			
Volume No.	No. of Contribution	No. of Citation	Average
104	21	348	20.54
103	28	422	24.91
102	26	574	33.88
101	18	350	20.66
Total	93	1694	100.00

It can be observed for average citation per contribution in each volume. Volume No. 102 .574 (33.88%) contributed 26 contribution of which highest numbers of citation appeared in vol. No.104.348. (20.54%) contributed 21 contribution of which minimum number of citation appeared.

Figure no. 6 Average Citation per contribution in each volume



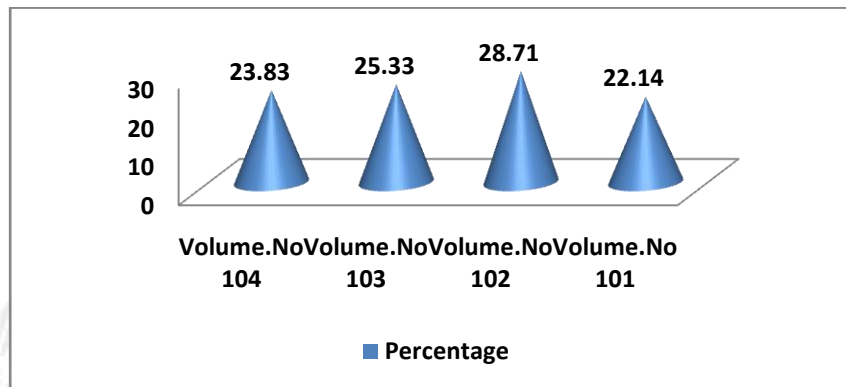
Average Page (per volume and per contribution) contribution

Table No.7 Average Page (per volume and per contribution) contribution

Average Pages (Per Volume & Per Contribution)			
Volume No.	No. of Contribution	Total Pages	Average
104	21	127	23.83
103	28	135	25.33
102	26	153	28.71
101	18	118	22.14
Total	93	533	100.00

It can be observed for the pages of contribution in each volume. Volume No. 102 153(28.71%) contributed 26 contribution of which highest numbers of pages appeared in vol. No.101 (22.14%) contributed 18 contribution of which minimum number of pages appeared.

Figure No.7 Average Page (per volume and per contribution) contribution



Conclusion:

Bibliometrics is a relatively new subject of information. It helps to evaluate information centers by the quantitative analyzed information. It deals with the mathematical and statistical analysis. Journal of Medical Library Association Online is half published in the year. Editor-in-Chief of the journal is Thomas Longas. in 1936. ISSN:1536-5050(Online). A Scientometric analysis is the technique these online downloaded journals are presented in a manner corresponding to objectives of the study.

References:

1. Doreswamy, M. (2001). Citation analysis of Ph. D. theses in Geography. University News, 39(48), 3-6.
2. Dulle, F. W. (2004). Creating a core journal collection for agricultural research in Tanzania: citation analysis and user opinion techniques. 53(5), 270-277.
3. Elkana, Lenderberg Metron, (1978), A scientometric study of the research performance, of the institute of Molecular and Cell Biology in ingapore. Scientometrics, 56(1), 95- 110.
4. Eva, Rodents. (2001), Advanced bibliometric methods as Quantitative care of peer review based evaluation and foresight exercises. Scientometrics, 36(1) 397-20.
5. Eugene, Garfield. (2002), Scientometric indicator data files. A multidimensional machine readable database for evaluative purposes. Scientometrics, 28 (1993) 137-150.
6. Fairthorne, R. A. (1923). Empirical hyperbolic distribution (Bradford, Zipf's Mandelbrot) for bibliometric description and predictions.
7. Feitelson, D. G. (2004). Predictive ranking of computer scientists using citeseer data. Journal of Documentation, 60(1), 44-61.
8. Frandsen, T. F. (2005). A bibliometric analysis of economics journals. Journal of Documentation, 61(3), 385-401.
9. James, J. (2008). Doctoral research at Mahatma Gandhi University 1983-2008: A bibliometric analysis. University News, 46(51), 1-10.
10. Joguesediffe, (1990) The concept of entropy in scientometrics and innovation research scientometrics, 18, 219-239