

Business & Economics Journal: A Scientometric Analysis

Mr. Mahore Anil Bajirao
PG Research Student,
Email: anilmahore1102@gmail.com

Abstract:

Analysis of information or data is one of the important parts of any study. Data analysis is doing for the purpose of huge volume of data is reduced into meaning full case report. Analysis of total 2827 citations articles in the journal during 2014 to 2018. The was done by using various parameters like to identify the car e journals, to rank of cited journal, to rank of cited author to find out geographical distribution of citations to find out the types of cited document, to find out of the total citation of the average in the journals. The data or information was presented in the form of table and graphs to show the result prominently and easily.

Keyword: Bibliometric, Scientometric Analysis, Business, Economic, Etc.

Information:-

A Scientometric analysis: Journal of Business & Economics Scientometric analysis is a branch of Bibliometric. It is an important research tools for understanding of the subject it aims at measuring the utility of documents and relationship between documents and fields. Journal of Business & Economics is by monthly published in the year. It was founded by Gary Graham, John Hill, and Hwanho Choi 2010 in UK. ISSN: 2155-7950. The Present study is based on 5 Volumes, 28 issues of Journal of Business & Economics during 2014-2018

Objectives of the studies:

The main objective of the present studies issue follows -

- 1) To Find Distribution of contributions (Volume wise).
- 2) To Find Authorship Pattern of Contributions
- 3) To Find Authorship Pattern of Contributions (Volume wise)
- 4) To Find Contribution (Institution –wise)
- 5) To Find The Geographical distribution of contribution International level is show.
- 6) To Find Average Citation per contribution in each volume
- 7) Average Page (per volume and per contribution) contribution.

Distribution of contributions (Volume wise).

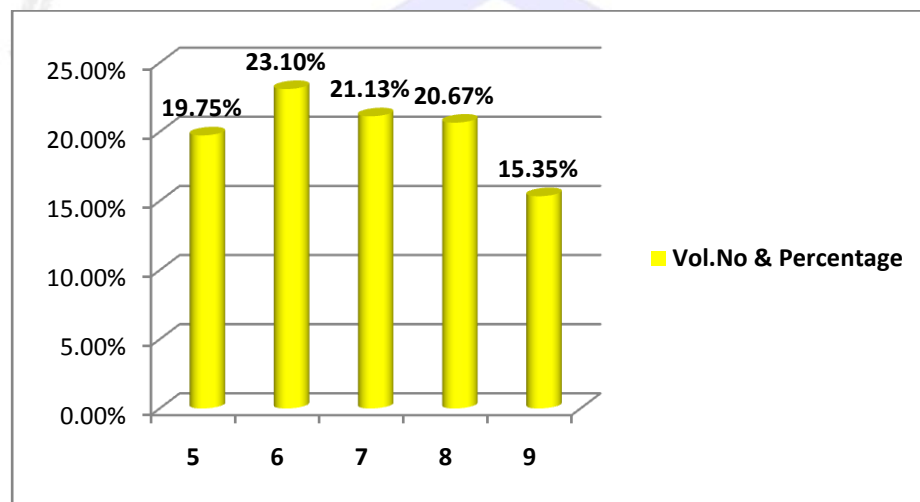
The distribution of contributions is shown in table No.1

Table No.1 Distribution of Contributions

Year	Vol. No.	No. of Issue	No. of Contribution	Percentage
2014	5	12	130	19.75%

2015	6	12	152	23.10%
2016	7	12	139	21.13%
2017	8	12	136	20.67%
2018	9	12	101	15.35%
TOTAL		60	658	100%

Figure no. 1 Distribution of Contributions.



(Source: Table No. 1)

Table No. 1 & Figure No. 1 depicts the details regarding the number of Articles published during 2014-2018 which was 658 and the year wise analysis of the contribution shows that average number of per year contribution is maximum i.e. 152 (23.10) in the year 2015.

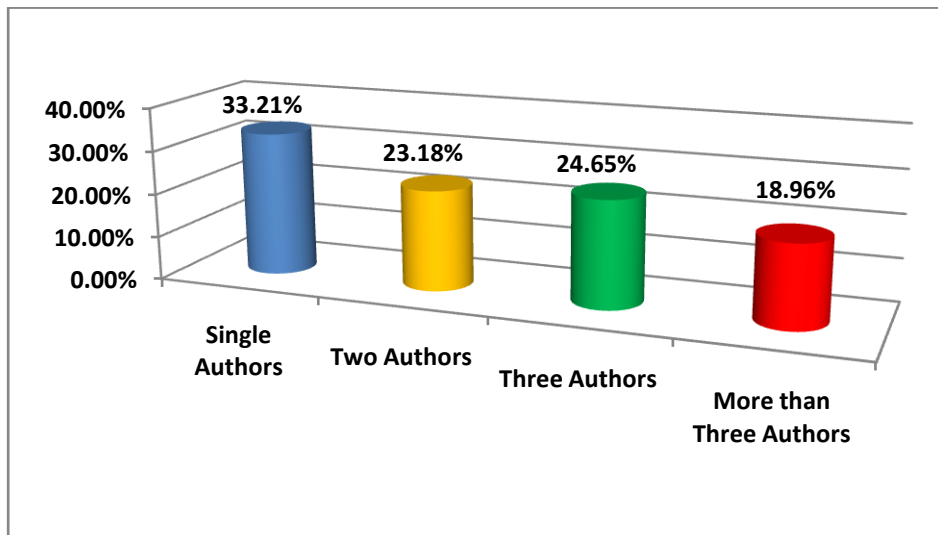
Authorship Pattern of Contributions

The authorship pattern of contributions is for shown in Table No.2.

Table No.2 Authorship Pattern of Contribution

No. of Authors	No. of Contribution	Total No. of Authorship	Percentage
Single Authors	384	384	33.21%
Two Authors	134	268	23.18%
Three Authors	95	285	24.65%
More than Three Authors	45	219	18.96%
TOTAL	658	1156	100.00%

Figure No.2 Authorship Pattern of Contribution



(Source: Table No. 1)

Table No. 2 & Figure No. 2 Indicates that the details about the authorship pattern 658 articles (33.21%) out of 384 articles have been contributed by Single author who is followed by more than Three Authors 45 (18.96%), 134 articles (23.18%) by two authors and 95 articles (24.65%) by three authors. Where “Hypothesis No. 1 is valid **“Majority of the contributions are contributed by Single Author”**”.

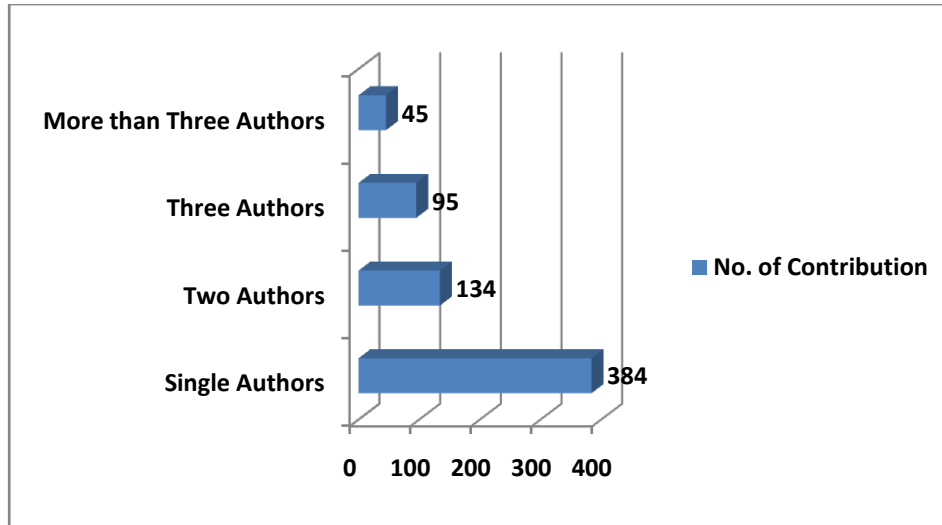
Authorship Pattern of Contributions (Volume-wise)

The authorship pattern of contributions is revealed in table in 3 given below.

Table No.3 Authorship Pattern of Contribution (Volume-wise)

Vol. No	Single Author	Two Author	Three Author	More than Three Authors	Total Contribution
5	81	17	7	25	130
6	64	38	50	0	152
7	93	15	27	4	139
8	69	42	9	16	136
9	77	22	2	0	101
Total	384	134	95	45	658

Figure No.3 Authorship Pattern of Contribution (Volume-wise)



(Source: Table No. 3)

Table No.3 and Fig No. 3 Shows the authorship pattern of contributions volume-wise regarding contributions by a single author records the highest contributions (384), However the two author contributions, (134) shows the three author contributions (95), the more than three author contributions (45), reflects the maximum percentage.

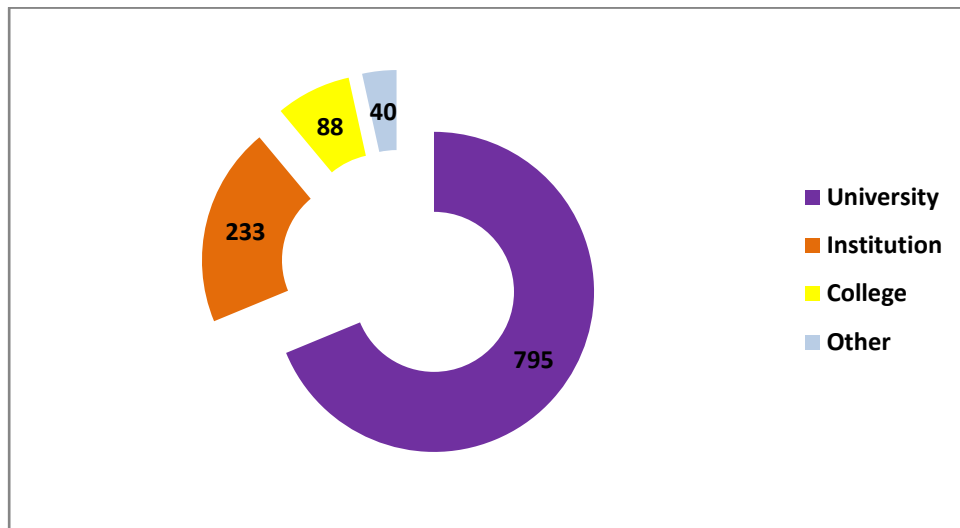
Contribution (Institution –wise)

Contribution is displayed in the table no.4.

Table No.4 Institution wise contribution

Vol. No	Year	University	Institution	College	Other	Total
5	2014	129	61	22	3	215
6	2015	97	29	9	9	144
7	2016	233	72	19	14	338
8	2017	182	26	31	8	247
9	2018	154	45	7	6	212
Total		795	233	88	40	1156

Figure no. 4 Institution wise contribution



(Source: Table No.4)

Table No. 4 & Fig No. 4 depicts the geographical distribution of contributions, University wise at the national level followed by institutions and colleges. It is inferred from the above table that university – wise contribution maximum is 1156 contributions were 795 contribution and College and Intuition contribution was 88 & 233 contributions & lastly others 40 contribution. **Hypothesis No.2 hence i.e. maximum number of contribution is at university level.**

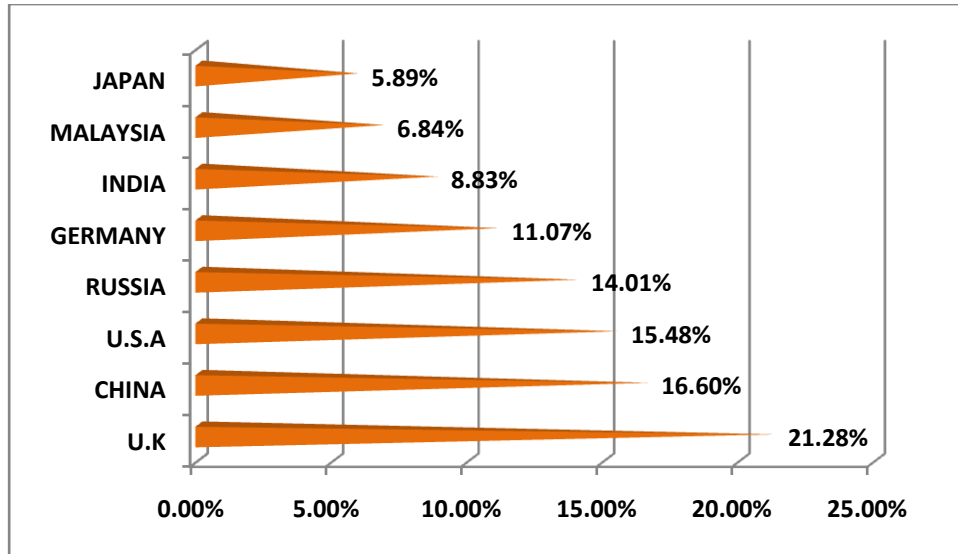
The Geographical distribution of contribution International level.

Geographical distribution of contribution International level follows as:

Table No.5 Geographical distribution of contribution in International level.

Sr. No	Name of State	No. of Contribution	Percentage
1	U.K	246	21.28%
2	CHINA	192	16.60%
3	U.S.A	179	15.48%
4	RUSSIA	162	14.01%
5	GERMANY	128	11.07%
6	INDIA	102	8.83%
7	MALAYSIA	79	6.84%
8	JAPAN	68	5.89%
TOTAL		1156	100%

Figure no. 5 Geographical distribution of contribution in International level.



(Source: Table No.5)

Table No. 5 & Fig No. 5 shows the geographical distributions of contributions at International level U.K is Maximum percentage (21.28%), and minimum Percentage of JAPAN is (5.89%).

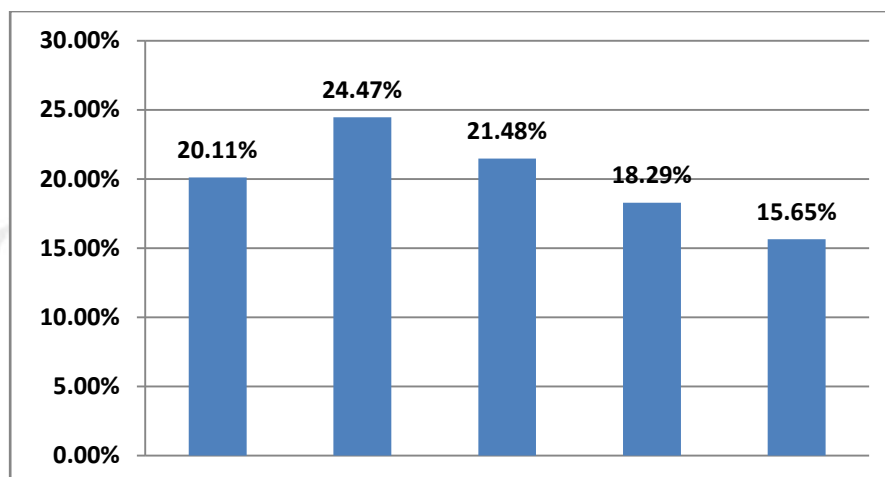
Average Citation per contribution in each volume

The average citation per contribution in each volume is shown in

Table No.6 Average Citation per contribution in each volume.

Vol. No.	No. of Contribution	No. of Citation	Average
5	130	1172	20.11%
6	152	1368	24.47%
7	139	1252	21.48%
8	136	1124	18.29%
9	101	911	15.65%
TOTAL	658	5827	100%

Figure no. 6 Average Citation per contribution in each volume.



(Source: Table No.6)

Table No. 6 & Fig No.6 it can be observed for average citation per contribution in each volume. Vol. no. (7) (21.48%) contributed 1252 contributions of which highest numbers of citation appeared in vol. no.6 (24.47%) 1368 contribution of which minimum number of citation appeared in vol. no.5 (20.11) 1172 contributed.

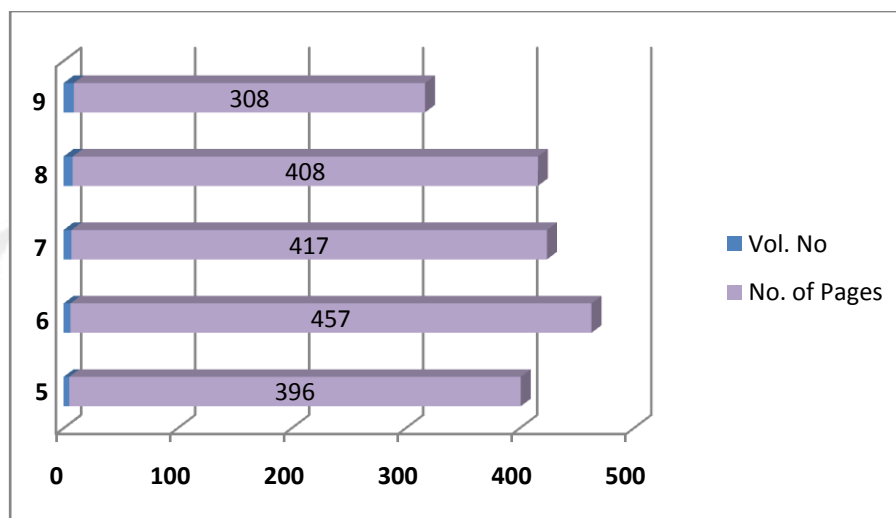
Average Page (Per volume and per contribution) contribution

Average Page (Per volume and per contribution) contribution in each volume is shown in

Table No.7 Average Page (per volume and per contribution) contribution.

Vol. No	No. of Contribution	No. of Pages	Average
5	130	396	19.93%
6	152	457	23.01%
7	139	417	20.99%
8	136	408	20.54%
9	101	308	15.53%
Total	658	1986	100%

Figure no. 7 Average Page (per volume and per contribution) contribution.



(Source: Table No.7)

Table No. 7 & Fig No.7 it can be observed for average pages per contribution in each volume. Vol. no. (8) (20.54%) contributed 408 pages. contributions of which highest numbers of pages appeared in Vol. no.6 (23.01%) 457 contribution of which minimum number of citation appeared in Vol.no.9 (15.53%) 308.

Conclusion:-

Bibliometrics is relatively new subject of information. It help to evaluate information centers by the quantitative analyzed information. It deals with the mathematical and statistical analysis. Journal of Business & Economics is by monthly published in the year. It was founded by Gary Graham, John Hill, and Hwanho Choi 2010 in UK. ISSN: 2155-7950. The Present study is based on 5 Volumes, 60 issues of Journal of Business & Economics during 2014-2018. A Scientometric analysis is the technique these online downloaded journals are presented in a manner corresponding to objectives of the study.

Suggestions:-

The research scholars citing the work of other author should cite details of the journal volume numbers, issue numbers, year of publication, authorship pattern, Geographical details, place of publication, Bibliographical details. Citation analysis of help the libraries to subscribe useful journals, find out care journal and handle whole library with maintaining standard. It also help research scholars to selects the document which gives the current information of related subject of their studies.

References:

1. Anderson, S., & Harris, J. (1995). Educators' use of electronic networks. Paper presented at the Annual Meeting of the American Educational Research Association, San Francisco, California.
2. Alkinsetal, (2003): Obsolescence of books in college. College & Research Libraries, 5(2): 115-125.

-
3. Bankapur, P. (1993): Bradford's law in different disciplines. *Annals of Library Science and Documentation*, 46(4), 133-138.
 4. Beena, S. (1997). *Social Science Books In Malayalam: A Bibliometric Prospective*. India.
 5. Chen, K. (2004). The construction of the Taiwan Humanities citation Index. *Online Information Review*, 28(6), 410-419.
 6. Doreswamy, M. (2001). Citation analysis of Ph. D. theses in Geography. *University News*, 39(48), 3-6.
 7. Dulle, F. W. (2004). Creating a core journal collection for agricultural research in Tanzania: citation analysis and user opinion techniques. 53(5), 270-277.
 8. Feitelson, D. G. (2004). Predictive ranking of computer scientists using citeseer data. *Journal of Documentation*, 60(1), 44-61.
 9. Garfield, E. (1955). Citation studies as a tool in journal evaluation. *Science* 471.
 10. Hargens, L. (1988), The literature of bibliometrics, scientometrics, And infometrics. *Scientometrics*, 52, 291-314.

