

A Scientometric analysis: International Journal of Revista Complutense de Educación

Miss Maya More

Research Scholar

Email: mayamore2007@gmail.com

Abstract:

Organization classification and quantitative evaluation of publication patterns of all macro and micro communications along with their authorships by mathematical and statistical calculus, (Selagupta, F 1930); bibliometric is the study of quantitative aspects of production, dissemination of related information. (Joguesediffe, 1990) include all quantitative models of science communication, storage dissemination and retrival of scientific international. (Glansé & Schoepslin, 1990); bibliometrics encompasses a number of empirical methods, such as bibliographics coupling & co-citation analysis. (Kessler & Small, 1995); the idea of using bibliometric methods in connection with construction maintenance of knowledge organization system is not new, but only few actual construction attempts have been made.(Rees-Patter & Garfield, 2000)

Information:-

A Scientometric analysis: International Journal of Revista Complutense de Educación Scientometric analysis is a branch of Bibliometric. It is an important research tools for understanding of the subject it aims at measuring the utility of documents and relationship between documents and fields.

International Journal of Revista Complutense de Educación is by Quarterly times published in the year. It was founded Prof. Mirger in 2013. In USA. ISSN O-3433617-9 (ONLINE). The Present study is based on 5 Volumes, 15 issues of International Journal of Revista Complutense de Educación during 2014-2018

Objectives of the studies

The main objective of the present studies issue follows -

- 1) To Find Distribution of contributions (volume wise).
- 2) To Find Authorship Pattern of Contributions
- 3) To Find Authorship Pattern of Contributions (ISSUE wise)
- 4) To Find Contribution (Institution –wise)
- 5) To Find The Geographical distribution of contribution International level is show.
- 6) To Find Average Citation per contribution in each volume
- 7) Average Page (per volume and per contribution) contribution.

Distribution of contributions (volume wise) .

The distribution of contributions is shown in table No.1

Table No.1 Distribution of Contributions

Year	Vol. No.	No. of Issue	No. of Contribution	Percentage
2014	2	3	25	25.51%
2015	3	3	19	19.38%
2016	4	3	23	23.46%
2017	5	3	19	19.38%
2018	6	3	12	12.27%
	TOTAL	15	98	100%

Figure no. 1 Distribution of Contributions

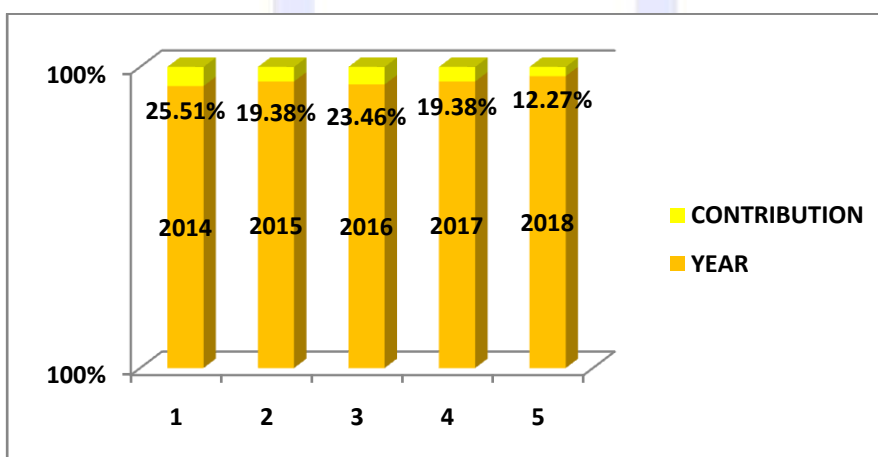


Table No. 1 & Figure No. 1 depicts the details regarding the number of Articles published during 2014-2018 which was 98 and the year wise analysis of the contribution shows that average number of per year contribution is maximum i.e. 25 (25.51) in the year 2014.

Authorship Pattern of Contributions

The authorship pattern of contributions is for shown in Table No.2.

Table No.2 Authorship Pattern of Contribution

No. of Authors	No. of Contribution	Total No. of Authorship	Percentage
Single Authors	38	38	38.77%
Two Authors	25	50	25.51%
Three Authors	15	45	15.30%
More than Three Authors	20	85	20.42%
TOTAL	98	218	100.00%

Figure No.2 Authorship Pattern of Contribution

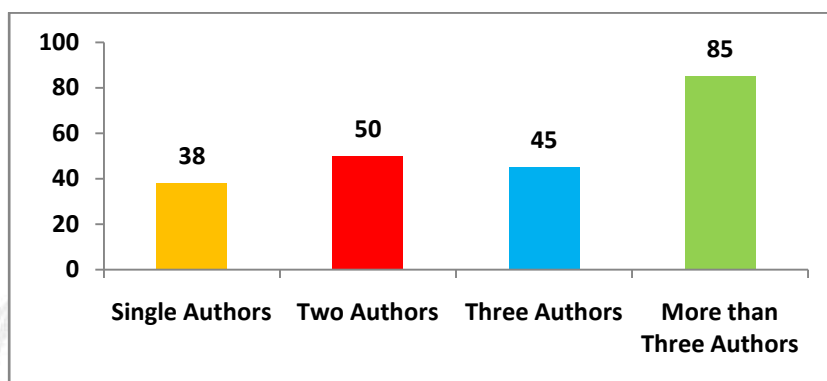


Table No. 2 & Figure No. 2 Indicates that the details about the authorship pattern 98 articles (38.77%) out of 38 articles have been contributed by Single author who is followed by more than Three Authors 15 (15.30%), 25 articles (15.30%) by two authors and 20 articles (20.42%) by three authors. Where “Hypothesis No. 1 is valid **“Majority of the contributions are contributed by Single Author”**”.

Authorship Patterns of Contributions (ISSUE wise)

The authorship pattern of contributions is revealed in table in 4 given below.

Table No.3 Authorship Pattern of Contribution (ISSUE-wise)

Vol.No	Single Author	Two Author	Three Author	More than Three Authors	Total
2	17	8	10	31	66
3	11	11	5	14	41
4	5	18	7	19	49
5	3	6	9	9	27
6	2	7	14	12	35
Total	38	50	45	85	218

Figure No.3 Authorship Pattern of Contribution (ISSUE-wise)

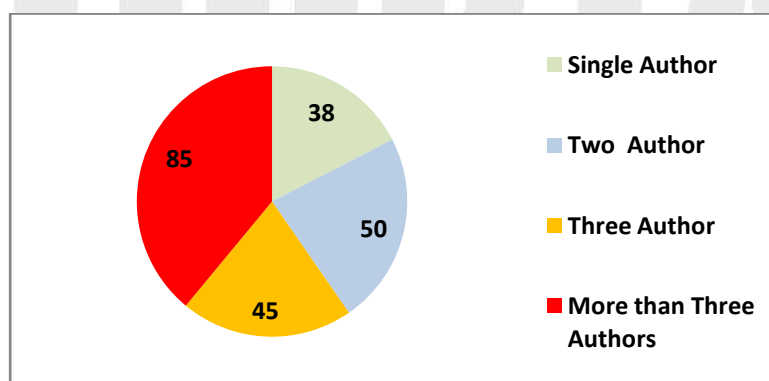


Table No.3 and Fig No. 3 Shows the authorship pattern of contributions volume-wise regarding contributions by a more than three single author records the highest contributions (38), However the two author contributions, (50) shows the three author contributions (45), the more than three author contributions (85), reflects the maximum percentage.

Contribution (Institution –wise)

Contribution is displayed in the table no.4.

Table No.4 Institution wise contribution

Vol. no	Year	University	institution	college	other	Total
2	2014	21	11	5	16	53
3	2015	17	23	9	5	54
4	2016	15	9	12	3	39
5	2017	11	7	10	7	35
6	2018	13	7	15	2	37
	Total	77	57	51	33	218

Figure no. 4 Institution wise contribution

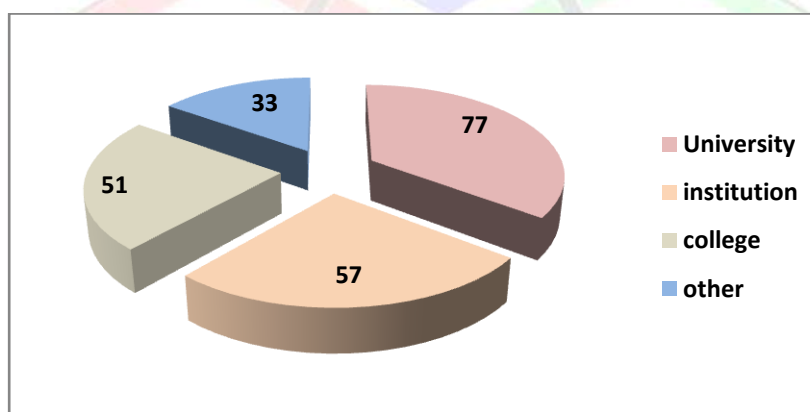


Table No.4 depicts the geographical distribution of contributions, University wise at the national level followed by institutions and colleges. It is inferred from the above table that university – wise contribution maximum is 218 contributions were 77 contribution and College and Intuition contribution was 51 & 57 contributions. **Hypothesis No.2 hence i.e. maximum number of contribution is at university level.**

The Geographical distribution of contribution International level

Table No.5 Geographical distribution of contribution in International level

Sr. No	Name of State	No.of Contribution	Percentage
1	USA	77	35.32%
2	CHINA	53	25.31%
3	INDIA	51	23.39%
4	UK	37	15.98%
	TOTAL	218	100%

Figure no. 5 Geographical distribution of contribution in International level

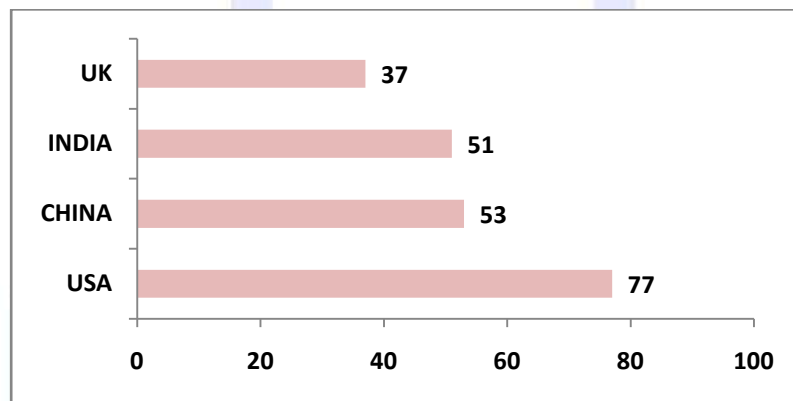


Table No.5 shows the geographical distributions of contributions at International level USA is Maximum percentage 77 (35.32%), and minimum Percentage of U.K is 37 (15.98%).

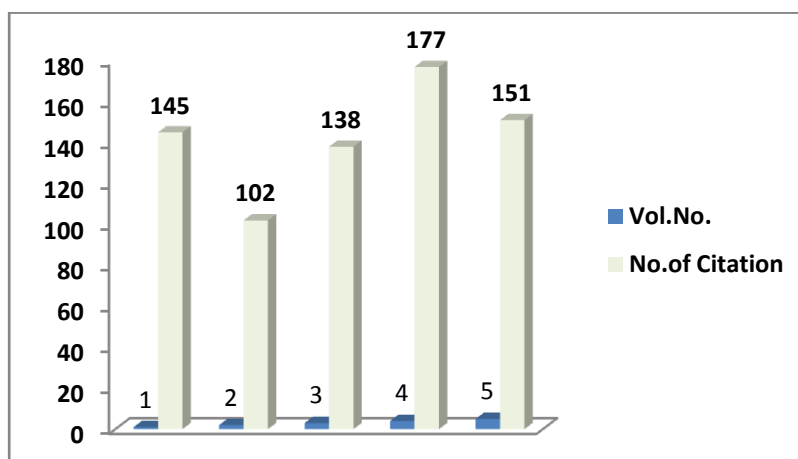
Average Citation per contribution in each volume

The average citation per contribution in each volume is shown in

Table No.6 Average Citation per contribution in each volume

Vol. No.	No. of Contribution	No. of Citation	Average
2	25	145	20.33%
3	19	102	14.30%
4	23	138	19.35%
5	19	177	24.82%
6	12	151	21.20%
TOTAL	98	713	100%

Figure no. 6 Average Citation per contribution in each volume



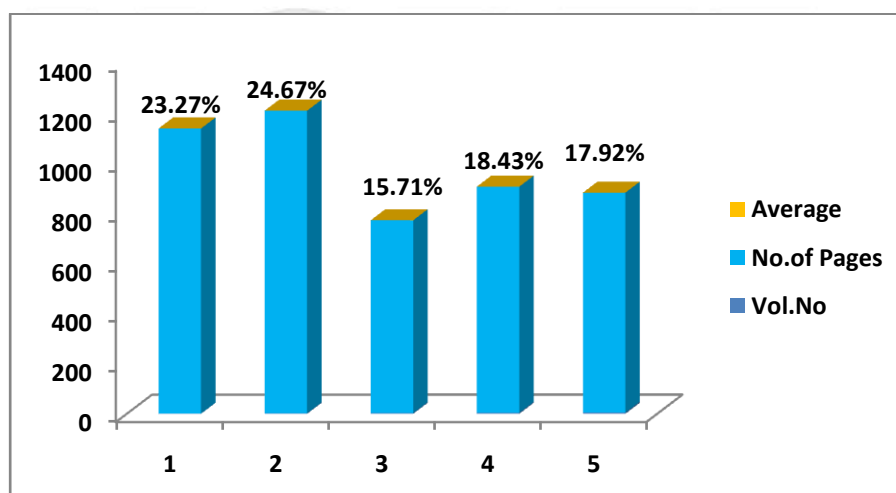
It can be observed for average citation per contribution in each volume. Volume No.(2) (20.33%) contributed 145 contribution of which highest numbers of citation appeared in vol. No.4 (24.82%) contribution of which minimum number of citation appeared.

Average Page (per volume and per contribution) contribution

Table No.7 Average Page (per volume and per contribution) contribution

Vol.No	Contribution	No.of Pages	Average
2	25	1137	23.27%
3	19	1207	24.67%
4	23	769	15.71%
5	19	902	18.43%
6	12	877	17.92%
Total	98	4892	100%

Figure no. 7 Average Page (per volume and per contribution) contribution.



It can be observed for average pages per contribution in each volume. Volume No.(2) (23.27%) contributed 1137 pages. contribution of which highest numbers of pages appeared in vol. No.3 (24.67%) contribution of which minimum number of citation appeared in Vol.No.4 (15.71%).

Conclusion:-

Bibliometrics is relatively new subject of information. It help to evaluate information centers by the quantitative analyzed information. It deals with the mathematical and statistical analysis. International Journal of Revista Complutense de Educación is by Quarterly times published in the year. It was founded Prof. Mirger in 2013 In USA. ISSN O-34336179 (ONLINE).The Present study is based on 5 Volumes, 15 issues of International Journal of Revista Complutense de Educación during 2014-2018. A Scientometric analysis is the technique these online downloaded journals are presented in a manner corresponding to objectives of the study.

References:

1. Angel Morales, (1990): A study of learning and retention with a web-bases IR interface, Journal of librarianship and Information Sceince, 37(1); 7-16.
2. Arkhipov, (1999): Domensticity and internationality in co- authorship.References and citation. Scientometrics.65(3).32-342
3. Bruvold, N. T., & Comer, J. M. (1988). A model for estimating the response rate to a mailed survey. Journal of Business Research, 16 (2), 101-116.
4. Chen, B. (2005). The construction of the Taiwan Humanities citation Index. Online Information Review,28(6), 410-419.
5. Dulle, F. W. (2004). Creating a core journal collection for agricultural research in Tanzania: citation analysis and user opinion techniques. 53(5), 270-277.
6. Elkana, Lenderberg Metron, (1978), A scientometric study of the research performance, of the institute of Molecular and Cell Biology in ingapore.Scientometrics, 56(1),95- 110.
7. Line, M. B. and Sandison, A. (1974). Obsolescence and changes in the literature with time. Journal of Documentation, 30,283.
8. Mahapatra, G. (2006). Scholarly use of web resources in LIS research: a citation analysis. Library Review, 55(9), 598-607.
9. Mahapatra, G. and Kaul, R. (1992). Self-citation by Indian Botanists. ILA Bulletin, 27(4), 167-167.
10. Weible, R., & Wallace, J. (1998). The impact of the Internet on data collection. Marketing Research, 10 (3), 19-23.
11. Yadav, J. R. (1984): The J-Shaped distribution of cisterns Journal of Documentation; 58(4), 383-395.